



www.myixi.net



info@myixi.net



SHENZHEN MYIXI POWER SUPPLY CO.,LTD

Office: Room 1308, Building 6, Qianhai Kexing Science Park, No. 24 Jinhai Road, Xixiang Street, Bao'an District, Shenzhen, China

GUANGDONG MYIXI TECHNOLOGY CO.,LTD

Factory: Floor 9, Building, 28, Zhongnan High-tech Electronic Information Industrial Park, Chenjiang Street, Huicheng District, **Huizhou** City, 516227, Guangdong Province, **China**

MYIXI

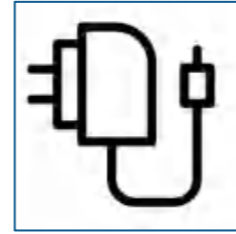
MYIXI INDUSTRIAL LIMITED

Office: Room 701, Unit 127, 7/F, Tower B New Mandarin Plaza
14 Science Museum Road



Business Catagory

CONSUMER ELECTRONICS



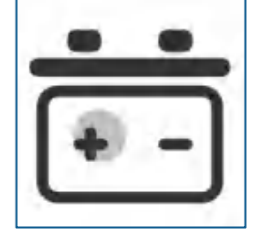
- Speakers
- LED Drivers
- Modems and Routers
- Personal Electronics

MEDICAL POWER SYSTEMS



- Hospital Equipment
- Home Care Appliances
- Fitness Equipment
- Diagnostic Equipment

INDUSTRIAL NEW ENERGY



- PCs and Monitors
- Scooter Chargers
- Printers and Scanners
- Industrial Equipment

About MYIXI

Established in 2010, MYIXI Inc. stands as a trailblazing high-tech enterprise with 15 years of expertise in power adapter innovation.

As a global leader in power solutions, we deliver cutting-edge switching power products and system solutions for three core sectors: consumer electronics, industrial/energy storage, and medical equipment.

Our proprietary technology matrix powers over 10 million units annually, serving clients across multiple countries and regions.

Why MYIXI

Proven Expertise: 15+ years in switching power solutions, serving 20+ global brands with 100M+ cumulative deliveries.

Industrial-Grade Quality: UL/CE/FCC-certified products with acceptance rates outperforming industry benchmarks.

Innovation-Driven: 8%+ annual R&D investment to pioneer next-generation solutions.

Trusted Partnerships: 8+ year strategic client collaborations with rising reorder rates.

Efficient Delivery: Value Stream Management (VSM) ensuring 98% on-time delivery and superior cost efficiency.

Sustainability Commitment: Eco-conscious manufacturing aligned with global ESG standards.



To be your preferred partner forswitching power supply solutions.



To lead globally as the benchmark in switching power supply manufacturing.



Excellence in switching power solutions for premium clients.



Innovation, Reliability
Compliance, Stability

CONSUMER ELECTRONICS



Mobile/Laptop Charger

Power Requirement: 18W, 65W, 120W

Common Output:
9V 2A, 19V 3.4A, 20V 6A

Model Related:

- MYX-0902000
- MYX-1903420
- MYX-2006000
-

Most modern smartphones require a charging voltage of 5V, which is standard across USB chargers. Laptops generally require higher voltages compared to mobile phones, with common values being 19V or 20V.



Monitor/Projector

Power Requirement: 65W, 90W, 120W

Common Output:
19V 3.4A, 24V 3.75A, 19V 6A

Model Related:

- MYX-1903420
- MYX-1906000
- MYX-2403750
-

Most computer monitors typically require a voltage of 19V, which is a common standard for many monitors. Projectors usually require a voltage of 12V to 19V, depending on the model and size.



Printer/scanner

Power Requirement: 30W to 500W

Common Output:
12V 1A, 24V 0.75A, 24V 2A

Model Related:

- MYX-1201000
- MYX-2400750
- MYX-2402000
-

Inkjet printers usually use 30 to 50W, and laser printers use 300 to 500W. For laser printers, the power supply is often built into the printer and can handle higher power requirements. Scanners typically require a voltage of 12V to 24V DC.



Smart Home Devices

Power Requirement: 10W to 60W

Common Output:
12V 1.5A, 14.4V 1.5A, 19V 1.2A

Model Related:

- MYX-1201500
- MYX-1441500
- MYX-1901200
-

Sweeping robots typically require a voltage of 14.4V to 19V DC. Other smart home devices, like smart speakers, generally require a voltage of 12V to 24V DC. This can vary depending on the brand and model.

MEDICAL POWER SYSTEMS



Medical Displays

Power Requirement: 20W to 150W

Common Output:
24V DC

Model Related:

- MYX-0902000MED
- MYX-2006000MED
- MYX-2406250MED
-

These displays are often used for patient monitoring or basic diagnostic purposes, power consumption can range from 60 watts up to 150 watts or more.



Nebulizer

Power Requirement: 10W to 60W

Common Output:
24V DC

Model Related:

- MYX-0502000MED
- MYX-1202000MED
- MYX-2402500MED
-

These include portable nebulizers and tabletop nebulizers, they often use DC adapters with output voltages ranging from 5V to 24V, depending on the model.



Ventilator

Power Requirement: 30W to 100W

Common Output:
15V 2A, 24V 3A, 24V 4A

Model Related:

- MYX-1502000MED
- MYX-2403000MED
- MYX-2404000MED
-

Ventilators require high safety standards and certifications are essential, especially medical-grade certifications like IEC 60601, output voltages commonly range from 12V to 24V DC.



Medical Bed

Power Requirement: 24W to 120W

Common Output:
12V 2A, 24V 2A, 24V 5A

Model Related:

- MYX-1202000MED
- MYX-2402000MED
- MYX-2405000MED
-

Medical beds commonly use adapters with output voltages around 12V, 24V, or sometimes 36V DC, the current rating depends on the power needed to drive the motors, often ranging from 1A to 5A or more.

INDUSTRIAL NEW ENERGY



Automated System

Power Requirement: 50W to 240W

Common Output:
24V DC

Model Related:

- MYX-0902000
- MYX-1903420
- MYX-2006000
-

Automated systems, such as assembly lines and packaging machines, rely on power adapters for consistent performance.



Safety Equipment

Power Requirement: 20W to 100W

Common Output:
24V DC

Model Related:

- MYX-0902000
- MYX-1903420
- MYX-2006000
-

Safety equipment, such as safety relays, light curtains, and emergency stops, require power adapters to ensure safety and compliance.



Small CNC machine

Power Requirement: 300W to 500W

Common Output:
24V 12.5A, 24V 20.8A, 48V 10.4A

Model Related:

- MYX-24012500
- MYX-24020800
- MYX-48010400
-

These CNC machines often come with a 500W spindle motor, which is sufficient for engraving, milling, and cutting softer materials like wood, plastic, and light metals. These machines usually output around 12V to 48V DC.V



Instrumentation

Power Requirement: 24W to 120W

Common Output:
12V 2A, 24V 2A, 24V 5A

Model Related:

- MYX-1202000
- MYX-2402000
- MYX-2405000
-

The instrumentation uses 12V to 24V DC for smaller or medium-sized scales, and larger scales may use built-in power supplies. Larger scales with more features, such as integrated displays and printers, may consume more power.

Customized Power Adapter



- ★ At MYIXI, we customize power adapters to meet your unique needs.
- ★ Backed by our state-of-the-art factory, we offer tailor-made solutions in a wide range of colors, plug types, cable lengths, and brand options.
- ★ With an annual production capacity of 8 million units, we guarantee the availability of sample inventory and ensure timely delivery.
- ★ We offer 24/7 after-sales support to provide a seamless experience from start to finish.



Telecom and Networking



Phone/Voip Phone

Power Requirement: 12W

Common Output:
5V 2A, 9V 1.2A, 12V 1A

Model Related:

- MYX-0502000
- MYX-0901200
- MYX-1201000
-

Desk phones commonly use 10W-12W power adapters. These adapters typically provide an output 5V DC 2A. The 10W PSU is specifically designed for desk phones, ensuring reliable communication.



Router/Optical Modem

Power Requirement: 15W to 30W

Common Output:
12V DC, 1.25A to 2.5A

Model Related:

- MYX-0503000
- MYX-1201250
- MYX-2402000
-

Wireless access points, which are crucial for providing Wi-Fi connectivity, often use power adapters in the range of 15W to 30W. These adapters typically output 12V DC with varying current ratings depending on the power requirements of the WAPs.



CCTV/IP Security Camera

Power Requirement: 15W to 60W

Common Output:
24V DC, 0.625A to 2.5A

Model Related:

- MYX-1201250
- MYX-1504000
- MYX-2400750
-

IP security cameras, used for surveillance and monitoring, commonly use power adapters ranging from 15W to 60W. These adapters usually ensure that the cameras operate efficiently and reliably.



POE Switch Devices

Power Requirement: Up to 240W

Common Output:
48V DC, 0.5A to 5A

Model Related:

- MYX-1200600
- MYX-2405000
- MYX-4805000
-

These adapters typically provide an output of 48V DC, which is used to power various PoE-enabled devices like IP cameras, WAPs, and VoIP phones. For example, we have a power budget of 240W and can power multiple devices simultaneously.

New Energy



Electric Vehicle Charger

Power Requirement: 120W to 240W

Common Output:
12V DC to 48V DC

Model Related:

- MYX-0902000
- MYX-1903420
- MYX-2006000
-

EV chargers, essential for charging electric vehicles, often use power adapters in the 120W to 240W range, providing outputs of 12V DC to 48V DC.



Self-Service Kiosk

Power Requirement: 60W, 65W, 120W

Common Output:
12V 5A, 19V 3.42A, 24V 5A

Model Related:

- MYX-1205000
- MYX-1903420
- MYX-2405000
-

Self-service kiosks are widely used in various industries, including retail and hospitality. These kiosks typically require reliable and stable power sources to ensure continuous operation. Many self-service kiosks use built-in power supplies.



Car modification

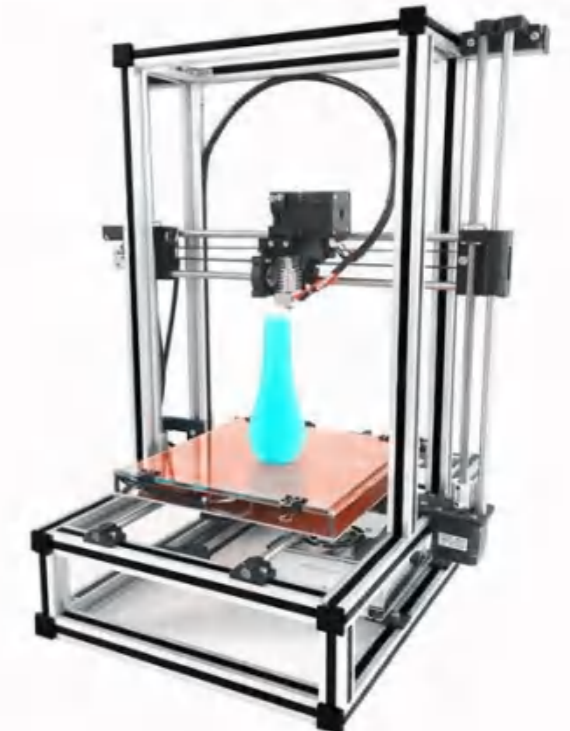
Power Requirement: 36W to 120W

Common Output:
12V 2A, 24V 3A, 48V 2.5A

Model Related:

- MYX-1202000
- MYX-2403000
- MYX-4802500
-

Car modifications have lots of applications. For example, car refrigerators typically operate on 12V or 24V DC. The car cigarette lighter socket typically operates at 12V DC. Typical values for car modifications range from 3A to 10A.



3D Printer

Power Requirement: 60W to 360W

Common Output:
12v 10A, 24V 10A, 24V 15A

Model Related:

- MYX-12010000
- MYX-24010000
- MYX-24015000
-

Most 3D printers operate on either 12V DC or 24V DC. It depends on the printer's design and the components used. Their typical values range from 5A to 30A, and some large 3D printers will use built-in power supplies.

Wall Mounted Power Adapter



AC DC Power Adapter

Common AC Plug:
US/EU/UK/KR/JP/AUS/IN/AR/BR/ZA/CN

Common Output voltage
5v 6v 9v 12v 15v 18v 20v 24v

- ★ Wide Input Voltage: 100V AC to 240V AC
- ★ Optional Input and Output Connectors
- ★ Extensive Customization Experience
- ★ High Reliability
- ★ High Efficiency
- ★ Compact Package
- ★ Two-Year Limited Warranty



Interchangeable globe power adapter set

Common AC Plug:
US/EU/UK/KR/JP/AUS/IN/CN

Common Output voltage
5v 6v 9v 12v 15v 18v 20v 24v

- ★ Wide Input Voltage: 100V AC to 240V AC
- ★ Global AC Plug Set
- ★ High Reliability
- ★ High Efficiency
- ★ Two-Year Limited Warranty

Desktop Power Adapter



12w-24w DC Power Adapter

- ★ Weight: 110g
- ★ Size: 96*43.5*28mm
- ★ Input Current: $\leq 0.8A$
- ★ Hold-Up Time: $\geq 8.3ms$
- ★ Turn-On Time: $\leq 3s$



25w-48w DC Power Adapter

- ★ Weight: 210g
- ★ Size: 120.5*52*34mm
- ★ Input Current: $\leq 1.5A$
- ★ Hold-Up Time: $\geq 8.3ms$
- ★ Turn-On Time: $\leq 3s$



90-120w Slim Power Adapter

- ★ Weight: 449g
- ★ Size: 149*68.5*32.5mm
- ★ Input Current: $\leq 2.2A$
- ★ Hold-Up Time: $\geq 8.3ms$
- ★ Turn-On Time: $\leq 3s$



Ultra-Slim 120w Power Adapter

- ★ Weight: 500g
- ★ Size: 152*74*25mm
- ★ Input Current: $\leq 2.2A$
- ★ Hold-Up Time: $\geq 8.3ms$
- ★ Turn-On Time: $\leq 3s$



48w Desktop Adapter

- ★ Weight: 150g
- ★ Size: 100*60*50mm
- ★ Input Current: $\leq 1.5A$
- ★ Hold-Up Time: $\geq 8.3ms$
- ★ Turn-On Time: $\leq 3s$



70w GAN PD power adapter

- ★ Weight: 220g
- ★ Size: 67*67*32mm
- ★ Input Current: $\leq 1.5A$
- ★ Hold-Up Time: $\geq 8.3ms$
- ★ Turn-On Time: $\leq 3s$



150w-240w Desktop Adapter

- ★ Weight: 210g
- ★ Size: 168*71*40.7mm
- ★ Input Current: $\leq 1.2A$
- ★ Hold-Up Time: $\geq 8.3ms$
- ★ Turn-On Time: $\leq 3s$



Custom Desktop Adapter

- ★ AC and DC plug custom
- ★ Color and size custom
- ★ Logo and nameplate custom
- ★ Anti EMI Magnetic Core
- ★

Built in Power Supply/Open Frame Power Adapter



- ★ Output Power: 10W to 750W
- ★ Raw Materials Can Be Traced
- ★ Support for Using Certain Components as Needed by Customers
- ★ High Efficiency Compliant with DOE and CoC Standards
- ★ Low Power Consumption in No-Load Condition
- ★ Comprehensive Product Line with Various Output Voltage Options



Product Certifications



IEEEEC CB SCHEME



Power Units UL ETL



CE LVD



KCC

In addition to those illustrated here other certifications including:

FCC/ROHS/GS/UKCA/ICES /KC/PSE/SAA/C-TICK/RCM IRAM/BIS/GEMS/EMC/CQC

EN 60950/EN 61347/EN 61558/ EN 62368/EN 60601 and more

Please contact our customer service to view

Third Party Certifications



ISO 9001: 2015 by CQC & CNAS



Audit Report by TÜV & Made-In-China



Verified Report by SGS & Alibaba

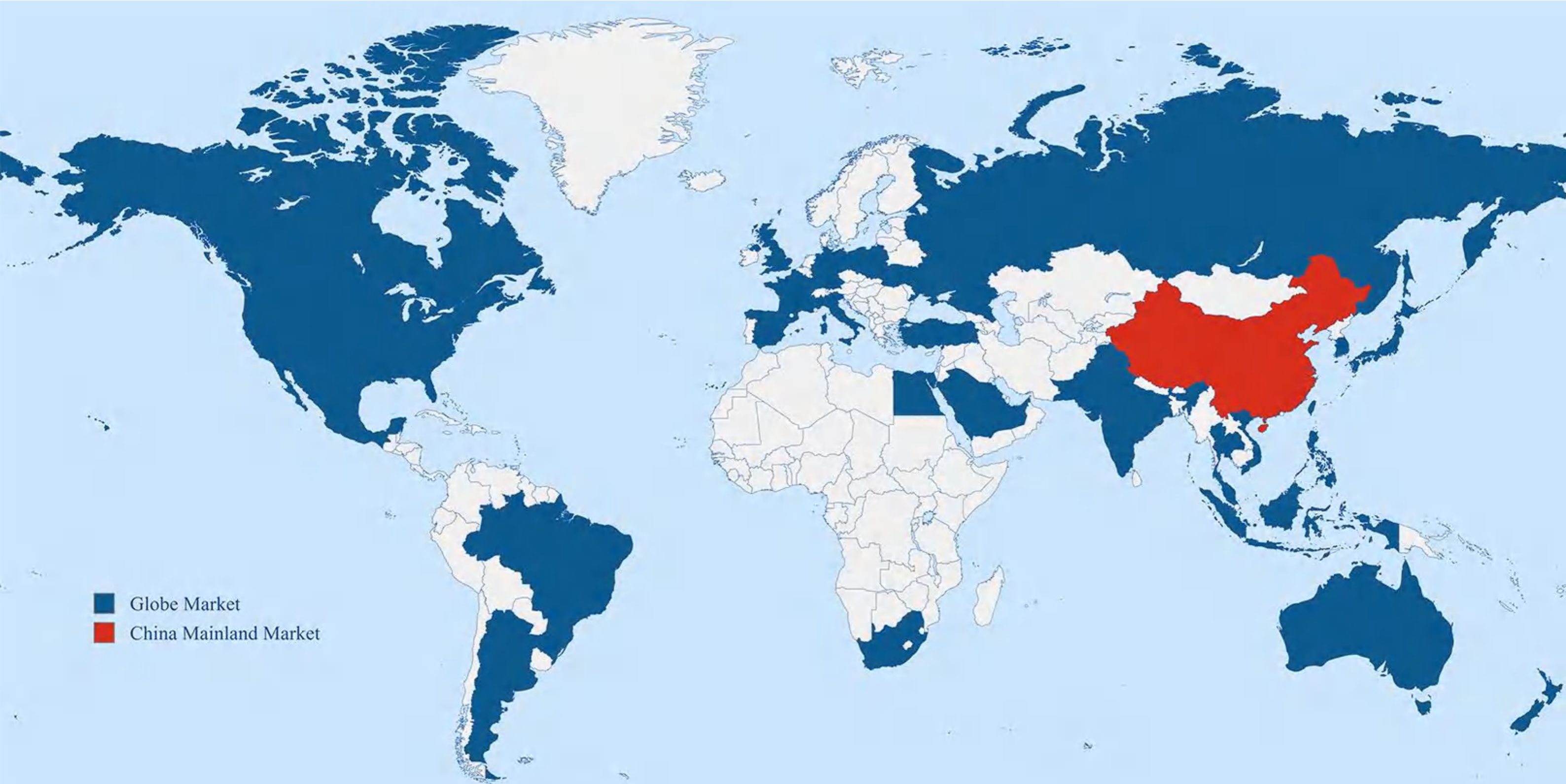


Six Patents that help us improve quality and save cost

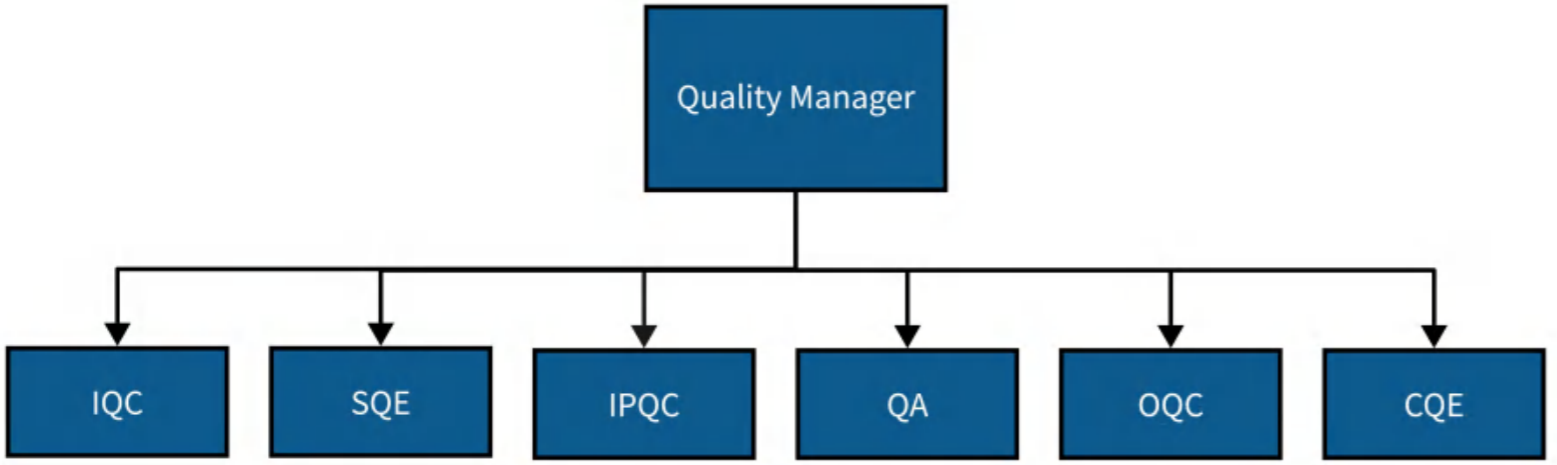
All report contact our customer service for the pdf version

MYIXI Market distribution

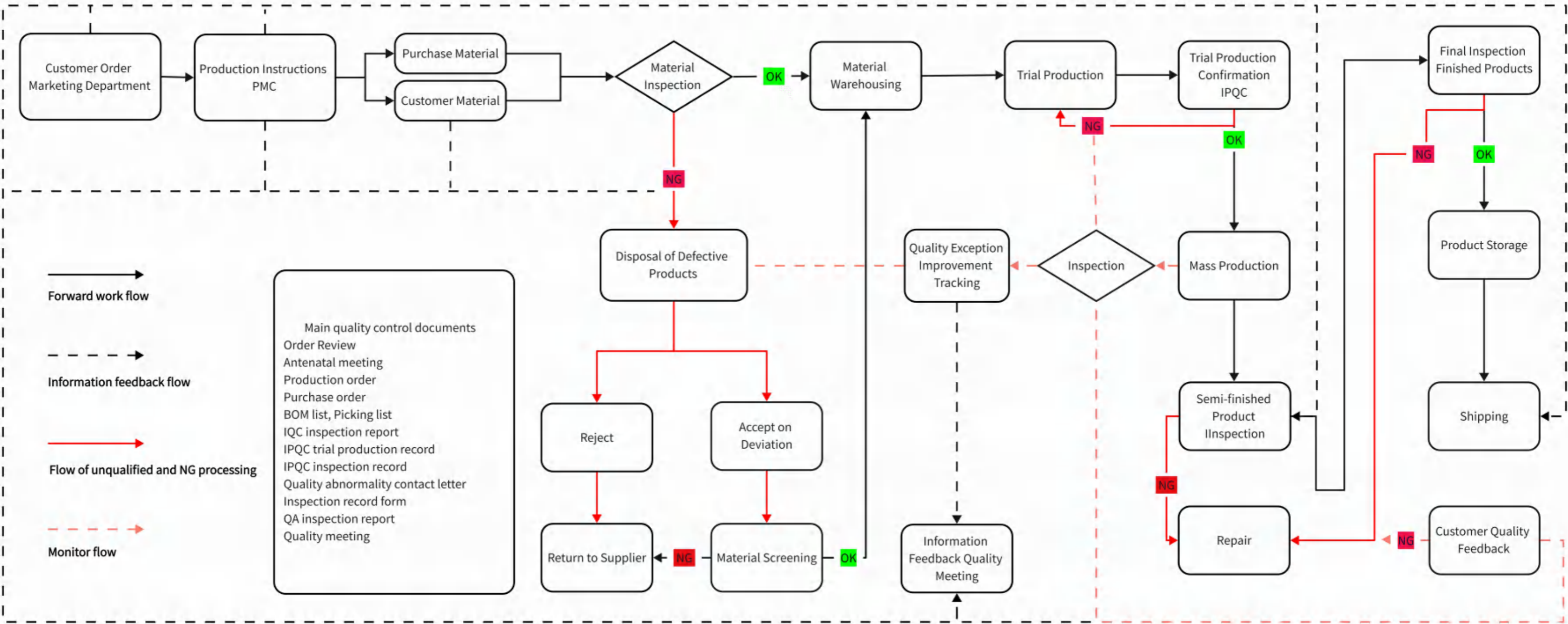
Main Market	Mainland China	North America	East Asia	Europe	Other Countries and regions
Share(%)	35	25	15	20	5



MYIXI Quality Control Flow Chart



At MYIXI, we are driven by a passion for excellence. Our rigorous quality control processes, coupled with continuous innovation, ensure that our products meet the highest standards of safety and performance.



Number of Staff in R&D Center/department

Service Year	Circuit Design	Structure Design	Transform Design	DQA	ID Design	Safety	Components Approval	Document	Others	Total
1~3	4	1	1					2	4	12
3~5	8	2	2	2	1	1	1		6	23
5~10	4	1		1	1	1	1		2	11
10+	5								1	6
Total	21	3	3	3	2	2	2	2	13	52



MYIXI Factory Display



Our focus-invested SMT workshop is equipped with top-grade imported machines, including American Heller reflow ovens and Japanese NXT and SANYO SMT machines, to ensure the highest quality of product motherboard assembly.



Our experienced workers, optimized production processes, and standard operation instructions enhance production efficiency and productivity, it can save costs, and ensure high-quality output.



Our advanced testing machines for transistors, capacitors, LCR, salt spray tests, RoHS compliance, and more ensure top product quality and reliability.



Each product from MYIXI undergoes a minimum of three kinds of quality tests and a 2-hour aging test before leaving the factory.



Strict temperature and humidity control, along with a clear warehouse management system, ensure quicker delivery.

Testing Equipment



Hi-Pot Test Equipment



DC ELECTRONIC LOAD



MDO 3014



RoHS tester



Capacitor Leakage Current Tester



Transistor Performance Tester



Insertion and Extraction Force Tester



LCR Tester

Exhibitions and Fairs

MYIXI is seeking collaboration with global business partners.

Assist our agents to increase the margin and achieve mutual success.



Partner & Milestones



* The above rankings are in no particular order

2011

- SHENZHEN MYIXI POWER SUPPLY CO.,LTD established.

2012

- Mass production of switching power adapters.
- MYIXI's 24w products have been welcomed by the Chinese domestic market.
- Our improved production process can make the power adapter cost lower with the same quality.

2013

- Start Global Sales.
- We began cooperation with well-known domestic brands such as TCL and HKC, and simultaneously started producing and selling adapters for the global market.

2015

- New R&D Center.
- We invested 2 million to establish a larger research and development laboratory and began to improve high-power power supplies on the market.

2020

- We made significant breakthroughs in the research and development of high-power power supplies, involving power structure, temperature control, plugging and unplugging, heat dissipation, etc., and applied for patents..
- Our power supplies have sold a total of 300 million units, and we have received recognition from renowned companies such as Philips.

2023

- Our overall sales volume reached 600 million units, and our R&D center is developing energy storage power supplies, medical power supplies, and Level 7 energy consumption standard power supplies.

Reliable
Performance
with MYIXI
Power Adapter



MYIXI

Advanced Manufacturing, Innovative Technology

Visit MYIXI Website

Welcome to Our Company for Visits and Business Affairs

Our reception room is in Huizhou
Approximately 2 hours away from Shenzhen Bao'an International Airport

www.myixi.net | info@myixi.net | panpanma@myixi-power.com

2025 - All information and specifications are subject to change without prior notice.

© 2025 SHENZHEN MYIXI POWER SUPPLY CO., LTD. All Rights Reserved.